

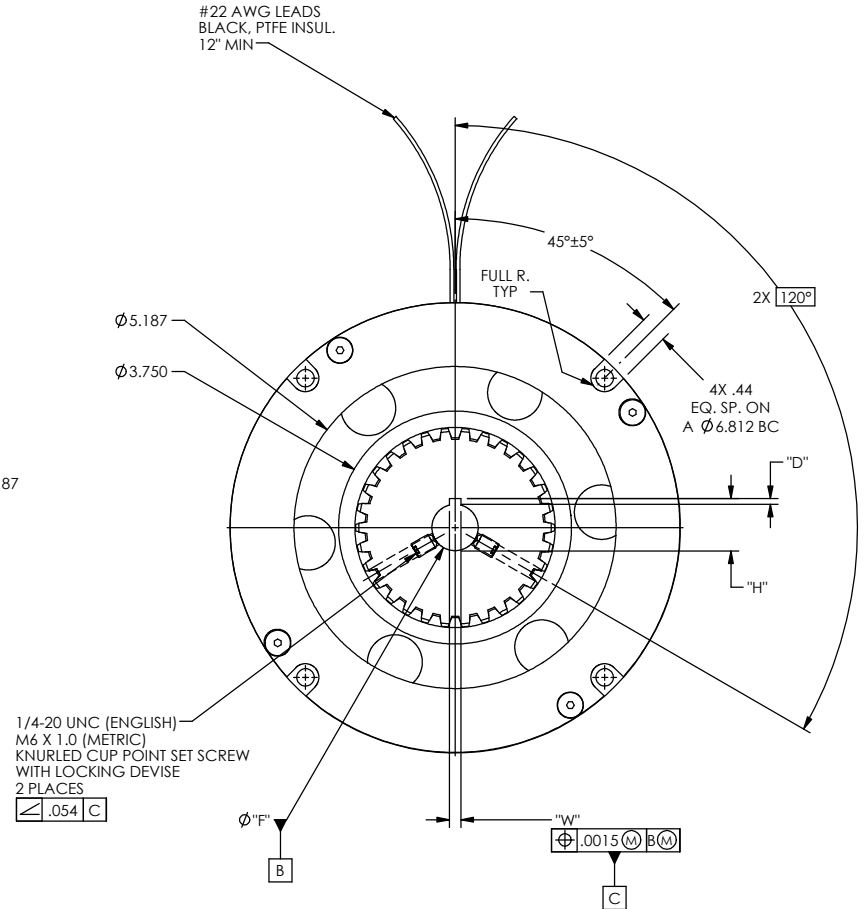
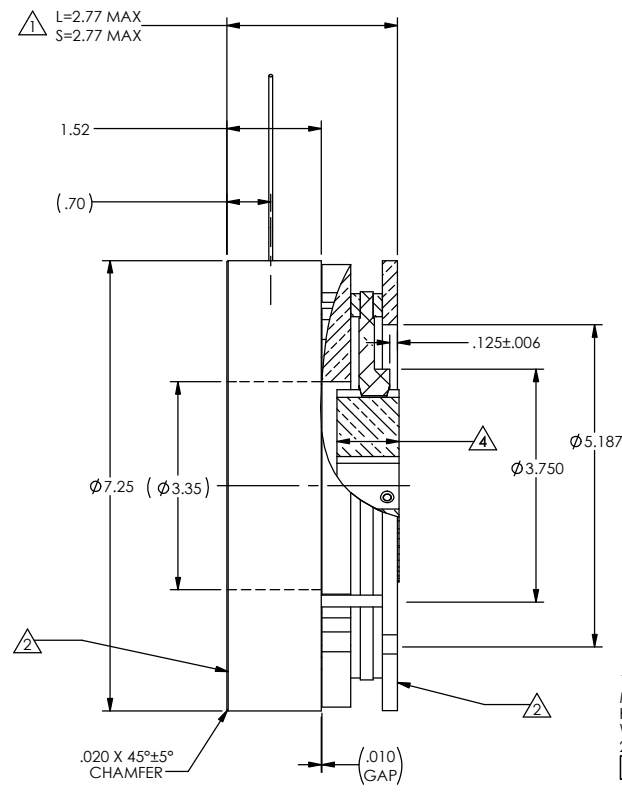
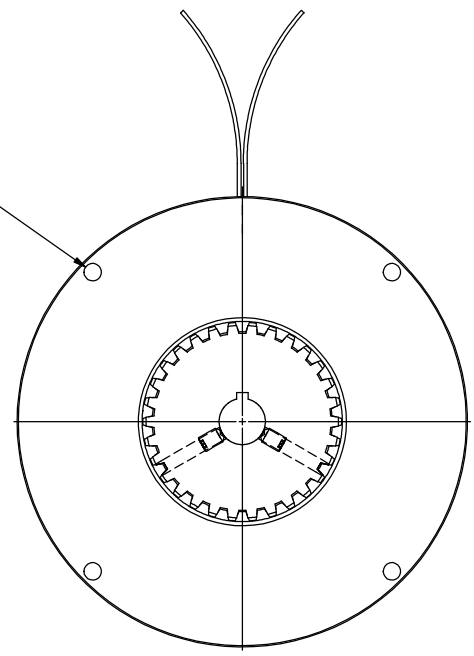
MODEL NUMBER	Ø F	W	H	VOLTAGE
SB-70-24-E16	1.000	.251	1.113	24 VDC
SB-70-24-E20	1.250	.251	1.365	
SB-70-24-E24	1.500	.376	1.669	
SB-70-24-E26	1.625	.376	1.796	
SB-70-24-E28	1.750	.376	1.922	
SB-70-24-E32	2.000	.501	2.223	
SB-70-90-E16	1.000	.251	1.113	90 VDC
SB-70-90-E20	1.250	.251	1.365	
SB-70-90-E24	1.500	.376	1.669	
SB-70-90-E26	1.625	.376	1.796	
SB-70-90-E28	1.750	.376	1.922	
SB-70-90-E32	2.000	.501	2.223	

MODEL NUMBER	Ø F (H8)	W (J59)	H +.2 -0	VOLTAGE
SB-70-24-M25	25MM	8MM	3.3MM	24 VDC
SB-70-24-M30	30MM	8MM	3.3MM	
SB-70-24-M35	35MM	10MM	3.3MM	
SB-70-24-M40	40MM	12MM	3.3MM	
SB-70-24-M45	45MM	14MM	3.8MM	
SB-70-90-M25	25MM	8MM	3.3MM	90 VDC
SB-70-90-M30	30MM	8MM	3.3MM	
SB-70-90-M35	35MM	10MM	3.3MM	
SB-70-90-M40	40MM	12MM	3.3MM	
SB-70-90-M45	45MM	14MM	3.8MM	

REVISIONS				
REV	ECO	DESCRIPTION	DATE	CHECKED
-	-	NEW DRAWING		
A		ADDED ROHS STAMP	8/13/2013	JFH
B		RE-DRAWN TO SW	12/30/2014	JFH CAG

CUSTOM BORES AVAILABLE, CONTACT FACTORY FOR ASSISTANCE

Ø .281 THRU
4X EQ. SP.
ON A 6.812 BC

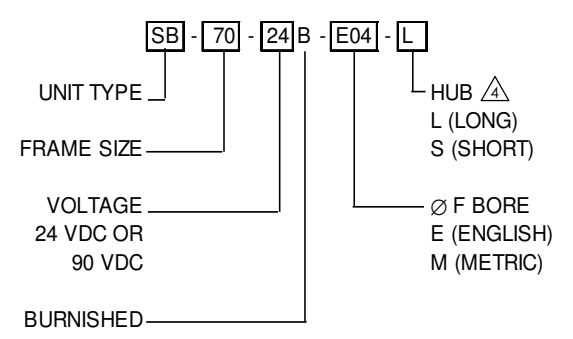


ASSEMBLY AND ALL COMPONENTS MUST MEET EU DIRECTIVE 2002/95/EC (RoHS)

TECHNICAL DATA @ 20°C			
STATIC TORQUE (BURNISHED) MIN		1200 LB-IN	
COIL DATA:			
VOLTAGE (V _{DC})		(24 V _{DC})	(90 V _{DC})
RESISTANCE (OHMS)		12.0±10%	180±10%
POWER (WATTS) MAX		(53.33 @ 24 V _{DC})	(50.0 @ 90 V _{DC})
PULL-IN VOLTAGE (V _{DC}) MAX		16	60
		21.6 VDC @ MIN AMP TURNS Δ	81.0 VDC @ MIN AMP TURNS Δ
PULL-IN TIME (ms) NOM		140	
DROP-OUT TIME (ms) NOM		250	
DIELECTRIC STRENGTH		500 VAC - 60 HZ - 1 MIN	
INSULATION RESISTANCE		500 MEGOHMS MIN @ 500 VDC	
BRAKE ROTOR /HUB INERTIA (NOM)		16.34 X 10 ⁻³ LB IN SEC ²	
BRAKE WEIGHT (LB)		(20.2)	

- Δ HUB LOCATION (SET BY CUSTOMER)
- Δ CAN BE MOUNTED ON EITHER FACE
- Δ 100°C MOTOR AMBIENT TEMP. @ BRAKE LOCATION BRAKE COIL TEMP RISE (40°C) WHEN CONTINUOUSLY ENERGIZED @ RATED VOLTAGE. i. e., 140°C BRAKE WILL RELIABLY RELEASE @ 90% OF RATED VOLTAGE.

PART NUMBERING SYSTEM



<p>THIRD ANGLE PROJECTION</p>	<p>UNLESS OTHERWISE SPECIFIED: DIMENSIONS ARE IN INCHES. DIAMETERS CONCENTRIC .003 TIR. FACES PERPENDICULAR .003 INTERPRETATION PER ASME Y14.5M-1994.</p> <p>FRACTIONS: ±1/64 DECIMALS: .00 ±.01 .000 ±.005 ANGLES: ±30°</p> <p>HEAT TREAT: -</p> <p>FINISH: -</p>	<p>REMOVE ALL BURRS AND BREAK SHARP EDGES - .003/010 ALL INSIDE CORNERS TO BE .015 R MAX UNLESS OTHERWISE SPECIFIED.</p>	<p>THOMSON DELTRAN</p>
		<p>APPROVALS</p> <p>DRAWN: CLW DATE: 03/14/97</p> <p>CHECKED: P.J.L DATE: 03/14/97</p> <p>DES ENG: A.J.C DATE: 03/14/97</p> <p>MFG ENG: -</p> <p>QUAL ENG: -</p>	<p>SERVO BRAKE ENGLISH - METRIC</p> <p>SIZE: C DWG. NO.: SB-70 CATALOG</p> <p>SCALE: 1:2 SHEET: 1 OF 1 CODE IDENT: 58655</p>